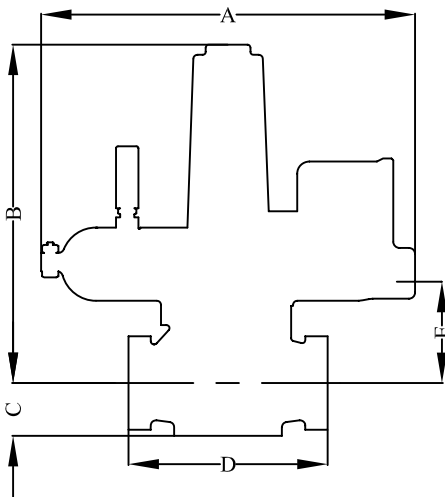
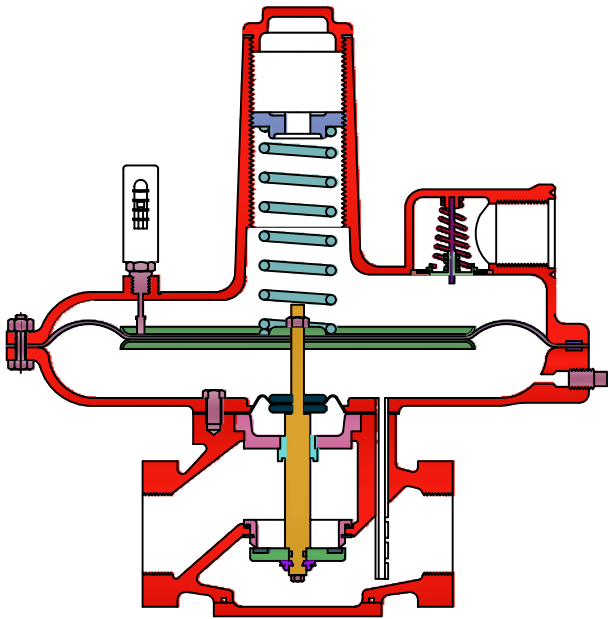


P.R.V FOR GAS SERVICE (LP)



SIZE	A	B	C	D	E	SPHG. WT
¾" NPT	188	200	47	146	67	10 lbs.
1" NPT	261	296	47	146	64	15 lbs.
1 ¼" NPT	261	296	47	146	64	15 lbs.
1 ½" NPT	356	331	61	191	91	28 lbs.
2" NPT	356	331	61	191	91	28 lbs.
2 ½" NPT	356	331	61	210	91	30 lbs.

1221 STANDARD REGULATOR WITH INTERNAL CONTROL

▶ **DOUBLE ACTING VENT DAMPER**

Assures fast response plus stable operation

▶ **INTERNAL CONTROL TUBE**

Engineered for accurate pressure control

▶ **REMOVABLE ORIFICE**

Precision knife - edge plus molded soft seats assure positive tight shutoff orifice in ¾", 1" and 1 ¼"

▶ **VALVE SIZE**

1", 1 ¼", 1 ½", 2", 2 ½" Screwed End

▶ **INLET PRESSURE**

15 PSI

▶ **OUTLET PRESSURE**

1 ½" W.C to 2 PSI

▶ **BODY MATERIAL**

C.I / Die Cast Iron / Aluminium

▶ **DIAPHRAGM CASE**

Die Cast Aluminium

▶ **SPRING**

Color Coted Spring Steel Material

Nutech Valves

37, Shreeji Industrial Estate, Raypur Mill Compound, Saraspur, Ahmedabad - 24

Ph..(O) :- 079 - 29292112, 32923375 Fax :- 079 - 22133122

E-Mail :- sales@nutechvalves.com Website :- www.nutechvalves.com

AN ISO 9001:2000 Certified Co.