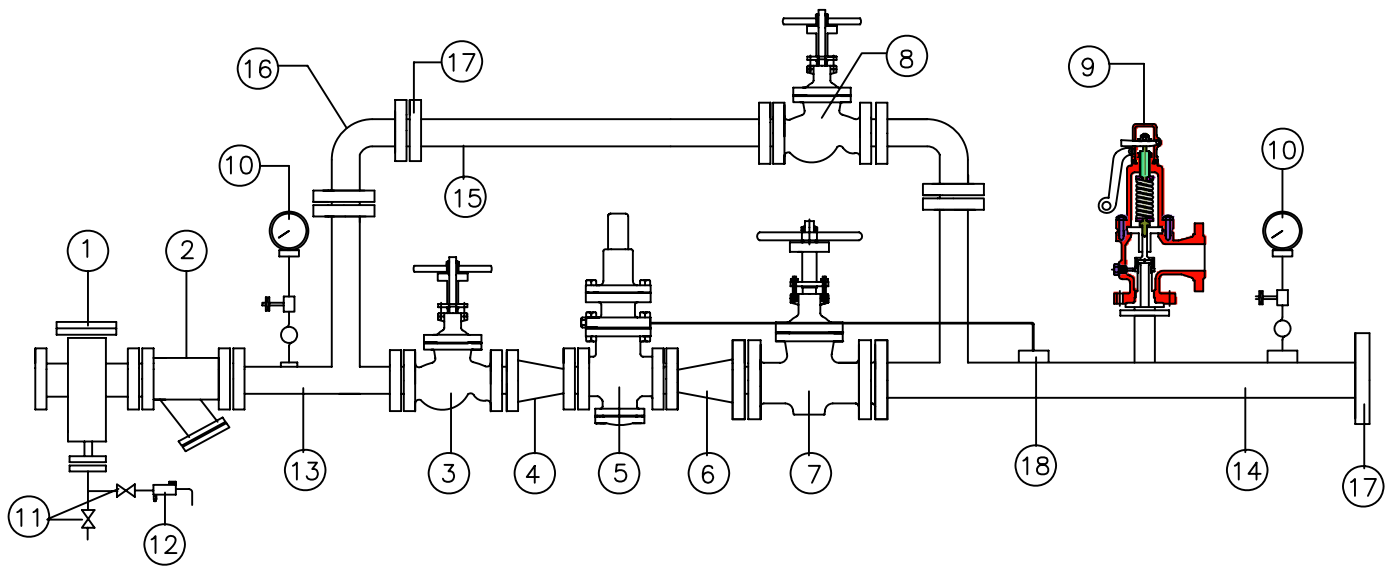


PRESSURE REDUCING STATION



18	COUPLING
17	FLANGES
16	BEND
15	BY PASS PIPE
14	OUTLET PIPE
13	INLET PIPE
12	STEAM TRAP
11	STOP VALVE
10	PRESSURE GAUGE
9	SAFETY VALVE
8	STOP VALVE (BYPASS)
7	STOP VALVE (OUTLET)
6	DIVERGER
5	REDUCING VALVE
4	REDUCER
3	STOP VALVE (INLET)
2	STRAINER
1	STEAM SEPARATOR
SR NO	ITEM

- ▶ ALL PIPES MATERIAL ARE CARBON STEEL SEAMLESS
- ▶ INLET FLANGE ARE AS PER STANDARD
OUTLET FLANGE ARE AS PER STANDARD
- ▶ FLANGES ARE TO BE WELDING
- ▶ HYD. TEST PRESSURE OF PRS AS PER STANDARD

TECHNICAL SPECIFICATION

FLOW RATE kg/hr. (MAX.)	1200
INLET PRESSURE kg/cm ² g	5.0 TO 300
OUTLET PRESSURE kg/cm ² g	2.0 TO 150
INLET TEMPERATURE 'C	SATURATED

Nutech Valves

37, Shreeji Industrial Estate, Raypur Mill Compound, Saraspur, Ahmedabad - 24
 Ph..(O) :- 079 - 29292112, 32923375 Fax :- 079 - 22133122
 E-Mail :- sales@nutechvalves.com Website :- www.nutechvalves.com

AN ISO 9001:2000 Certified Co.