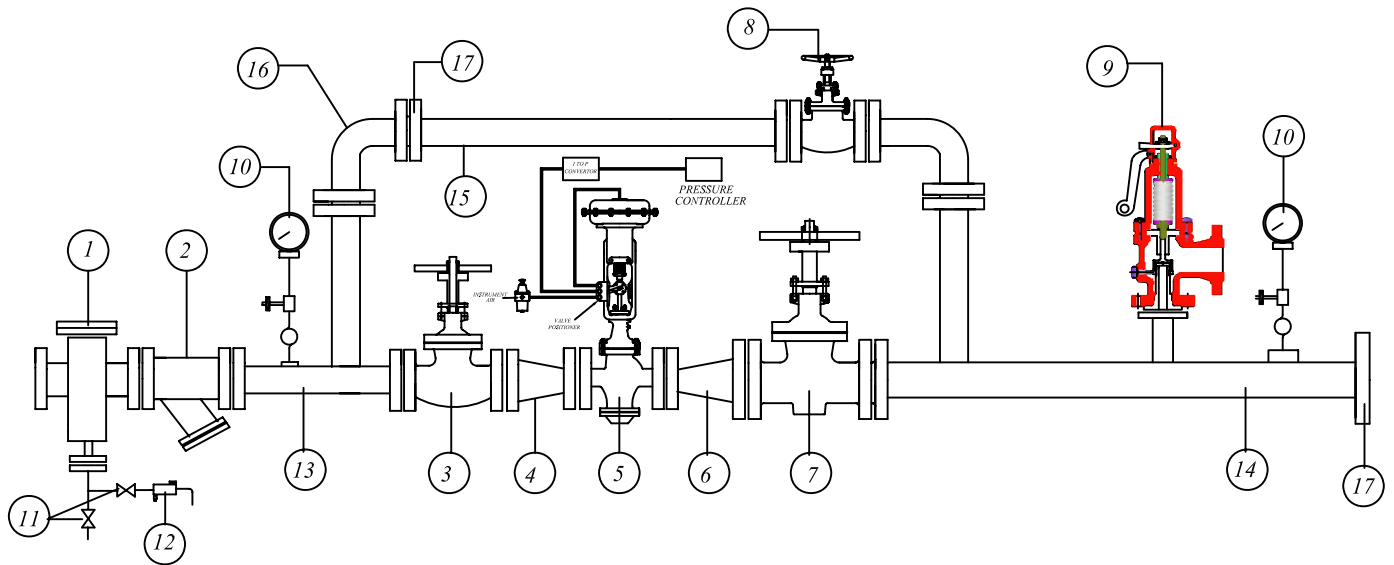


# PRESSURE REDUCING STATION

## WITH CONTROL VALVE



17	FLANGES
16	BEND
15	BY PASS PIPE
14	OUTLET PIPE
13	INLET PIPE
12	STEAM TRAP
11	STOP VALVE
10	PRESSURE GAUGE
9	SAFETY VALVE
8	STOP VALVE (BYPASS)
7	STOP VALVE (OUTLET)
6	EXPANDERD
5	CONTROL VALVE
4	REDUCER
3	STOP VALVE (INLET)
2	STRAINER
1	STEAM SEPARATOR
SR	ITEM

- ▶ ALL PIPES MATERIAL ARE TO BE OF CARBON STEEL SEAMLESS TO ASTM A 106 GR. B ,SCH 40
- ▶ INLET FLANGE ARE AS PER ANSI B16.5-300#  
OUTLET FLANGE ARE AS PER ANSI B16.5 150#
- ▶ FLANGES ARE TO BE WELDING AS PER FIG. 29 OF I.B.R.
- ▶ ALL DIMENSIONS ARE INMM AND TOLE. MAINTAINED WITHIN  $\pm 100\text{mm}$
- ▶ HYD.TEST PRESSURE OF PRS 75 kg/cm<sup>2</sup> FOR 300 #

### **TECHNICAL SPECIFICATION**

FLOW RATE kg/hr. (MAX.)	10000
INLET PRESSURE kg/cm <sup>2</sup> g	20
OUTLET PRESSURE kg/cm <sup>2</sup> g	10
INLET TEMPERATURE 'C	SATURATED

### **Nutech Valves**

37, Shreeji Industrial Estate, Raypur Mill Compound, Saraspur, Ahmedabad - 24  
 Ph..( O ) :- 079 - 29292112, 32923375 Fax :- 079 - 22133122  
 E-Mail :- sales@nutechvalves.com Website :- www.nutechvalves.com

**AN ISO 9001:2000 Certified Co.**